

The Santa Fe Botanical Garden celebrates, cultivates and conserves the rich botanical heritage and biodiversity of our region. In partnership with nature, we demonstrate our commitment through education, community service and the sustainable management of our nature preserves and the Santa Fe Botanical Garden at Museum Hill.

## SUMMER 2014

### In this Issue:

Letter from the CEO	1
Phase Two: Critical Next Steps	2
Education in the Garden	3
Phase Two Naming Opportunities	4
Why Give to the Campaign	6
Capital Campaign Donors	7
Upcoming Events	8



REBECCA FARR

CELEBRATE! Summer Solstice in the Garden, June 21

## Dear Garden Members, Donors and Friends,

**What a difference a year makes!** The Santa Fe Botanical Garden at Museum Hill will soon complete its first year of operations. It has been an amazing period due to your generous support of the Capital Campaign goal to build a botanical garden in Santa Fe. The dedication of many has created a place of great beauty where over 25,000 visitors, and counting, discover each day an appreciation of New Mexico's abundant flora and the precious resources necessary to sustain it.

The Botanical Garden, and its community of supporters, is growing. In early 2013, our membership was 550—a respectable number for an organization without a central Santa Fe location. Excitement about the Garden's opening, combined with the diligent efforts of the Garden's Board, staff and volunteers, has significantly boosted our membership, which now exceeds 1,745! Why is membership important? Membership is essential to supporting our educational mission and nourishing our community. It enables us to expand our educational reach across Santa Fe, and northern New Mexico, to provide resources and expertise as we foster partnerships with schools and other organizations. During the past year the Garden engaged over 2,500 students—a dramatic increase from the previous year. There is no doubt our expanding capacity is having a positive impact!

Another way the Garden is working to assure its permanence and growing programs is by launching the annual Summer Solstice fundraiser. The June 2014 event was a smashing success. The generous support of our sponsors, Violante & Rochford Interiors and Woods Design/Builders, combined with unique live auction items, resulted in nearly \$60,000 net in funds for the Botanical Garden. Thanks to the Solstice Committee, sponsors, and everyone who worked to make the event a success.

The momentum achieved from the opening of the Orchard Gardens (Phase One), positions us for the critical next step, Phase Two: Ojos y Manos. These new gardens and educational facilities, located across the Red Bridge, will be a place to explore ethnobotany—the shared history of humans and plants over the millennia—where all ages can learn through hands-on experiences and observation. Ojos y Manos will continue to raise the bar and provide a community gathering place to discover and appreciate the natural world. With your continuing commitment and the community's sustained support, the Santa Fe Botanical Garden's vital impact will grow to reach new heights. Please be in touch and thank you for your support!

**Clayton Bass, CEO**



“The dedication of many has created a place of great beauty where over 25,000 visitors, and counting, discover each day an appreciation of New Mexico's abundant flora and the precious resources necessary to sustain it.”



# Phase Two: Critical Next Steps

Roses in bloom



**The successful launch** of the Santa Fe Botanical Garden at Museum Hill is a point of pride for our community, and positions the Garden to take the next critical leap in building a

world-class destination with the construction of Phase Two: Ojos y Manos (Eyes and Hands). However, aspirations and dreams only become reality through continuous effort and financial support.

The Phase Two budget is \$2.1 million, roughly the same as Phase One, which in retrospect is an amazing value considering the return on our community's investment. But fulfillment of the Capital Campaign's three-phased vision requires ongoing financial support from a growing donor base. To date the Campaign has raised nearly \$800,000 in commitments for Phase Two. However, for the Garden to break ground we need an additional \$300,000 to move forward. An additional \$1 million to cover the full construction costs will also need to be raised. Together we can do this!

As you consider support for the Capital Campaign, please weigh the Botanical Garden's current position. The Santa Fe Botanical Garden is now a proven investment, a dynamic community education partner, with a growing national reputation. Our organization's professional capacity has grown with the careful addition of key staff posi-

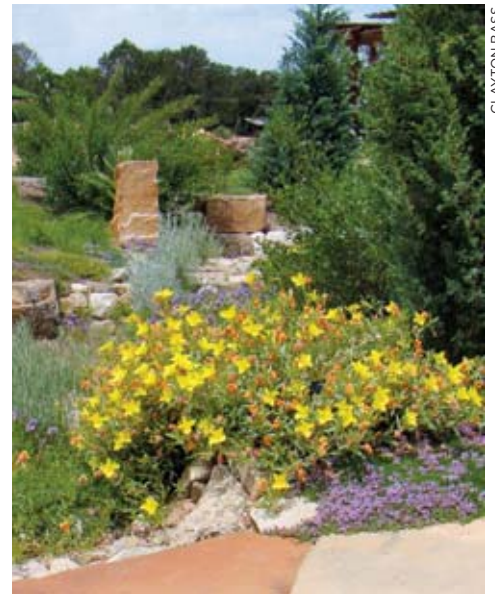
tions including: Directors of Education, Horticulture, Public Affairs, and Finance, a Collections Manager, and Coordinators of Development and Membership. The staff's expertise is reflected in the broad scope of Garden programs and events, and brings essential structure for the expanded capacity of Ojos y Manos.

What does your investment in Phase Two: Ojos y Manos allow the Garden to do that we cannot already do? Phase Two is conceived as integrated facilities for learning and discovery in a natural setting. Fresh air, mountain vistas and the New Mexico sky provide the backdrop for exploring native plants while learning about humankind's dependence upon Southwest plant communities throughout history. Three outdoor classrooms with shade structures, a large central gathering place, terraced planting areas, four rockeries overlooking the Arroyo de los Pinos, two interactive discovery areas, an Hornos Plaza and gardens for native plants are just some of the naming opportunities within Phase Two. Your support will assure these educational components enrich the lives of citizens of all ages in our community.

If you have already given to the Campaign, you understand the satisfaction of a realized dream. Please consider if Phase Two is a fit for your future investment in the Garden. If you are just joining the Garden's initiative, we encourage you to consider a gift. Your support will provide a tangible asset for generations to come.

## CAPITAL CAMPAIGN STEERING COMMITTEE:

Clayton Bass, Elva Busch, Joan Dayton, Cathy Gronquist, Donna Spina Helmholz, Nora Hillier, Dodie Jackson, Cathy Kalenian, Ann Livingston, Susan Lummis, Cynthia Melugin



*Calylophus hartwegii* (Hartweg's sundrops)



*Spirit House*, by sculptor Kevin Box



*Light Boat*, by Kevin Box



CRISTINA SALVADOR

Learning in the Garden

# Education in the Garden

The Santa Fe Botanical Garden is dedicated to its mission of education.

## OUR EDUCATIONAL GOALS

- To educate the public about the rich botanical heritage and biodiversity of our region
- To support local schools in educating the next generation of citizens
- To foster a love of the natural world
- To encourage and develop service learning and community service opportunities related to botanical and ecological issues

## WE DO THIS BY PROVIDING

- Lectures, hands-on classes and activities
- Science based field studies, guided tours and hikes
- Rich educational materials
- Beautiful cultivated and natural spaces where individuals can gather and enjoy our extraordinary environment

Thanks to Mollie and the work of many volunteers, both adult and youth education offerings have greatly expanded in their variety and scope. We served over 2,500 youth in the 2013-2014 school year, with activities ranging from early childhood story-time through high school science programming.

Students from twenty-three schools visited the Botanical Garden at Museum Hill and the Leonora Curtin Wetland Preserve. All school programs are fully aligned with the new Common Core state standards, as well as state and national science standards. Adult educational opportunities now include an expanded lecture series, monthly hands-on workshops in the Botanical Garden and regular art classes. These are in addition to continued programming, such as Library Coffee Hour and the Fall and Winter Lecture Series.

The addition of Phase Two: Ojos y Manos will enable the Garden to augment our educational opportunities in new and exciting ways. This new learning space will allow for larger school and adult groups and a greater variety of programming, from science and cooking, to weaving and art. With three dedicated outdoor classrooms, two exploration places, and a learning pavilion with a seating capacity of 100, youth and adults will have spaces to explore, discover, and play in the natural environment. Tiered gardens for annual crops will allow visitors to participate in hands-on learning ex-



CRISTINA SALVADOR

Agua Fria Elementary second grader



BARBARA GOEDE

El Dorado cactus garden tour

periences, from planting to harvesting. The Hornos Plaza will provide a setting in which cooking demonstrations and classes can be offered. Ethnobotanical plantings will help make the connection between our rich cultural heritage and the importance of flora in the survival of Native American and Spanish populations in northern New Mexico. The second phase of the Santa Fe Botanical Garden at Museum Hill truly presents an unprecedented opportunity to explore the importance of place with local New Mexicans as well as visitors to our unique part of the world.

The Garden staff is continually working to create opportunities for individuals to connect with and learn from nature and to nurture a sense of responsibility for the natural world and our culturally rich community.

In 2013, the educational capacity of the Santa Fe Botanical Garden increased exponentially, beginning with the hiring of our Education Director, Mollie Parsons.

## NAMING OPPORTUNITIES

**We welcome your contributions, large or small.** If you would like to make a substantial gift to the Capital Campaign, please choose from among many attractive naming opportunities available at higher gift levels. Named gifts may be made anonymously, in recognition of the donor, or in honor or memory of others.

To make a gift to the Capital Campaign, please contact Clayton Bass at 505.471.9103 or [clayton@santafebotanicalgarden.org](mailto:clayton@santafebotanicalgarden.org) or visit our website [www.santafebotanicalgarden.org](http://www.santafebotanicalgarden.org) for complete information on all types of giving.

### **\$1,500,000 Ojos y Manos – Your Name on Phase Two**

Focusing upon ethnobotany, the plant lore of indigenous cultures, Phase Two's educational mission is beautifully captured in the theme Ojos y Manos: Eyes and Hands. This singular opportunity to name Phase Two will establish an endowment to assure the permanence of the Garden and its educational mission for generations to come.

#### ① **\$500,000 – The Gathering Place**

The dramatic centerpiece of Phase Two, measuring nearly 50 feet in diameter, is the focal point for myriad educational activities and celebrations. Dance, music, drama, and a variety of learning and entertainment experiences will blend into the Garden's tapestry of offerings for all ages.

#### ② **\$250,000 – Learning Center Pavilion**

The primary gathering place where visitors enjoy the wide range of programs offered within Ojos y Manos. The roofed pavilion provides shelter for a capacity of 100 on terraced seating.

#### ③ **\$200,000 – Learning Ramada (1); \$125,000 – Classroom Sunrise, Sunset (2)**

Groups of all ages will gather in these shaded interactive learning spaces where visitors and students will explore New Mexico's flora, fauna, climate change, and water conservation.

#### ④ **\$150,000 – Hornos Plaza **RESERVED****

Overlooking the arroyo and Kearny's Gap Bridge, the Hornos Plaza is where food crops become scrumptious edibles through hands-on cooking activities. For many, this may become a favorite destination in the Botanical Garden.

#### ⑤ **\$150,000 – The Pergola**

Centrally located in the Garden, this dual-use structure serves as a restroom and storage facility. The attractive handicapped-accessible building, with its vine-covered pergola, enables the Botanical Garden to serve a full range of visitors.

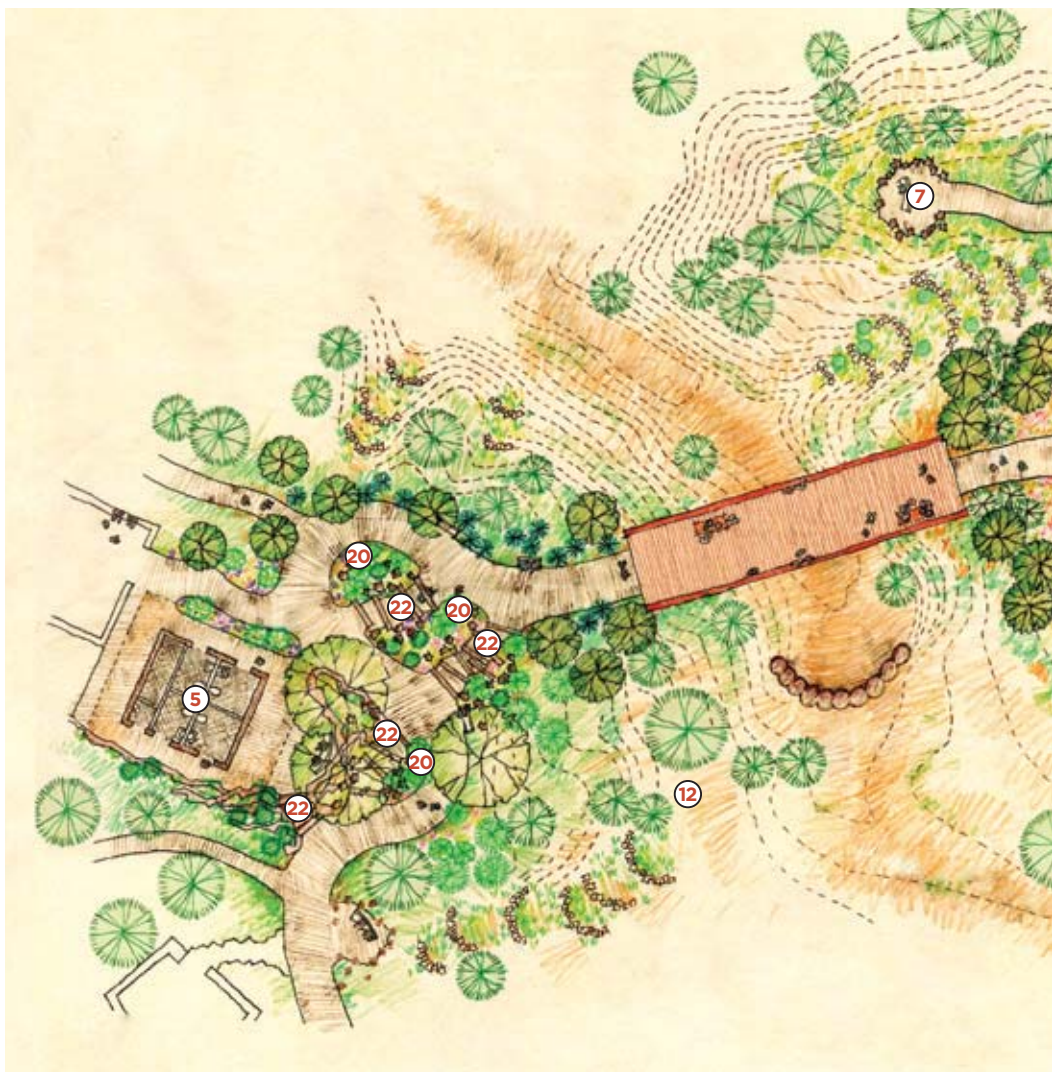
#### ⑥ **\$125,000 – Ethnobotanical Garden Collection (2)**

The human relationships with plants will be explored through flora used for weaving, dying, medicine, food, and habitation. With many changing seasonally, these plants will form the core of educational programming.

#### ⑦ **\$100,000 – Arroyo Overlook**

The Arroyo de los Pinos is the defining landscape feature within the Botanical Garden. Facing southwest, the overlook into the arroyo's canyon is an ideal place to pause, contemplate, and appreciate the natural beauty.

# Santa Fe Botanical Ojos y Manos:



Numbers in parentheses indicate there is more than one of the naming opportunities available. Each is priced separately.

#### ⑧ **\$100,000 – Sun Terrace; \$80,000 – Earth Terrace; \$60,000 – Moon Terrace**

Encircling the Gathering Place on three sides, each terrace serves multiple functions during the year, both as planting areas of seasonal crops and for seating overlooking myriad activities within the central plaza. These structures are inspired by Native Americans' use of terraced agriculture as an ancient water harvesting technique.

#### ⑨ **\$75,000 – Central Procession Walkway**

Ascending from Kearny's Gap Bridge, this processional walkway is the dramatic entrance into Ojos y Manos. With richly planted areas on each side, visitors will know they are entering an inspiring and beautiful learning environment.

#### ⑩ **\$75,000 – Exploration Place Sunrise, Sunset (2) **2 RESERVED****

Hands-on learning experiences are essential aspects of a visit to the Garden's ethnobotanical area. These informal activity areas will provide creative spaces where students of all ages can gain a deeper appreciation of the natural world.

#### ⑪ **\$70,000 – Pavilion Seating, Outer; \$50,000 Seating, Middle; \$30,000 Seating, Inner**

These curved benches provide seating beneath the Learning Center Pavilion's covered structure. With total linear footage of seating increasing from lower to higher terraces, these combined benches will seat approximately 100 visitors.

# Garden at Museum Hill - Phase Two

## Eyes and Hands



### 12 \$50,000 - Native Plantings

Before crossing Kearny's Gap Bridge, visitors will be treated to a striking array of native plants that embody the spirit of Ojos y Manos and set the stage for entry into this new and exciting part of the Botanical Garden.

### 13 \$50,000 - Discovery Way Sunrise, Sunset (2)

This broad walkway encircles the Gathering Place, leading visitors to adventures in nature enriched by beautiful views of the arroyo and the Sangre de Cristo Mountains to the north and the Ortiz Mountains to the south.

### 14 \$50,000 - Stone Spiral Columns (2)

Framing a dramatic gateway into the Ceremonial Plaza, these majestic works of sculpture measure nearly eight feet high and are crafted from local stone, enhancing the authentic sense of place.

### 15 \$50,000 - Classroom Storage

This beautiful structure echoes New Mexico's traditional architecture while providing critical space for educational equipment, furniture, and materials.

### 16 \$50,000 - Discovery Garden Sunrise, Sunset (2) 2 RESERVED

With close proximity to activity areas for student learning, these garden areas will be planted with a variety of flora that support and give focus to the Garden's changing educational programs.

### 17 \$30,000 - Hornos Large (1); \$20,000 - Hornos Medium (2); \$10,000 - Horno Small (2)

Combining beauty and functionality, these charming structures have long been associated with Southwestern cultures' passion for food. Students of all ages will gain a deeper understanding of cooking and gardening techniques. The small hornos are scaled for children to learn about cooking techniques and food sources.

### \$35,000 - Furnishings, large classroom (1); \$25,000 - Furnishings, Sunrise, Sunset classrooms (2)

To create an engaging learning space for successful education programs for school groups and adult classes, the right equipment and furnishings are essential.

### 18 \$25,000 - Discovery Area Walk Sunset; \$15,000 - Discovery Area Walk Sunrise

Immediately accessible to the Discovery Walkway, these areas of the Garden will delight visitors with a rich variety of native plants from New Mexico and the Southwest.

### 19 \$25,000 - Rockeries (4) 2 RESERVED

New Mexico's dramatic geological history provides exquisite varieties of rocks. When combined with the work of gifted craftsmen and beautiful curved benches, these rockeries become inspiring places to pause and reflect upon nature.

### 20 \$20,000 - Pergola Planting Area, Large (2); \$15,000 - Pergola Planting Area, Small (1)

Nestled along a path that meanders its way to Kearny's Gap Bridge, these exquisite planting areas invite visitors to linger as they stroll from the Orchard Gardens to Ojos y Manos.

### 21 \$15,000 - Mosaic RESERVED

Embodying the rich history of New Mexico and Santa Fe, this elegant inlaid mosaic adorns the classroom storage structure and will inspire students and visitors to the Garden.

### 22 \$10,000 - Pergola Stairs (4)

As visitors make their way from the Orchard Gardens to Ojos y Manos, a series of stairs provides alternate paths to enjoy the enchanting plantings along the way.

### \$7,500 - Benches (12) 4 RESERVED

Beautiful teak benches located throughout the Garden will create an "outdoor living room" setting where visitors can pause to enjoy the quiet beauty of nature.

**Plant collection naming opportunities are forthcoming.**

# Why Give to the Campaign



CLAYTON BASS

View from the Art Trail  
*Folded Planes*, by Kevin Box

As we celebrate the one-year anniversary of the grand opening of the Santa Fe Botanical Garden at Museum Hill, we are poised to meet another milestone. In the fall of this year, we plan to break ground on the second phase of the Garden. Our goal is accessibility for the entire community—to be the Community's Garden. Ojos y Manos: Eyes and Hands represents another step in that direction. Phase Two will enable the Garden to reach a broader segment of the community through:

- Greatly expanded educational facilities and programming opportunities that will appeal to adults and children alike
- The creation of a large gathering place to bring people together for a whole range of community events, from music to theater to dance
- Provision of beautiful outdoor spaces that can be utilized for special events, such as weddings, receptions, and collaborations with our local partners
- Our focus on the intersection of plants and New Mexico's unique history and culture as a way of reminding us of our common heritage and connection to the natural world
- The extension of a public area that invites quiet reflection and deep appreciation of the extraordinary environment in which we all live

Put very simply, Ojos y Manos will further ground the Santa Fe Botanical Garden in the community by weaving our shared past with contemporary needs, interests, and issues.

## THREE WAYS YOU CAN GIVE

### Naming Opportunities

Naming a part of the Santa Fe Botanical Garden allows you to make a visible and lasting impact. You will be building something, literally from the ground up, that will inspire visitors for years to come and become only more beautiful as time goes by. The variety of naming opportunities lets you identify an aspect of the Garden that speaks to you or that you feel will best honor or memorialize someone special in your life. For some, that might mean designating a large gathering place, for others an outdoor classroom, while others might feel drawn to quieter, more intimate spaces.

### General Campaign Donation

If you do not have a specific naming opportunity to which you would like to direct your funds, you may make a general donation to the Capital Campaign. General campaign donations play a critical role in enabling us to reach the \$2.1 million needed to complete Phase Two. Every contribution to the campaign helps to make the second phase of the Santa Fe Botanical Garden, Ojos y Manos, a reality.

### Legacy Giving

Planned gifts are essential to providing the long-range financial support needed to sustain the Santa Fe Botanical Garden, and are a wonderful way of ensuring that the Garden will continue to provide delight, beauty, and wisdom to generations of members and visitors. Legacy gifts may be directed toward specific aspects of the Garden—such as a naming opportunity, support for a specific program, investing in community outreach, or funding a staff position—or may be aimed at supporting the general needs of the organization.

## ADDITIONAL PLANNED GIVING INFORMATION

To learn more about planned giving possibilities, contact our development coordinator, Cynthia Melugin, at [cynthia@santafebotanicalgarden.org](mailto:cynthia@santafebotanicalgarden.org) or visit the website at [www.santafebotanicalgarden.org/support](http://www.santafebotanicalgarden.org/support).

## BOARD OF DIRECTORS:

### Officers

**Cathy Gronquist**  
*President*

**Jerry Richardson**  
*Vice President*

**Kevin Flores**  
*Treasurer*

**Ann Livingston**  
*Secretary*

### Members

**Fletcher R. Catron**

**Dr. Letitia Chambers**

**Kenneth Alan Collins**

**Linda Donnels**

**Barcy Fox**

**Deborah Gaynor**

**John R. Hendricksen**

**Nora Hillier**

**Bonnie Joseph**

**Cathy Kalenian**

**Mary Mitchell**

**Michael Violante**

## STAFF:

**Clayton Bass**  
*Chief Executive Officer*

**Scott Canning**  
*Horticulture and  
Special Projects Director*

**Jeri L. Chenelle**  
*Visitor Services Coordinator*

**Fran Cole**  
*Public Affairs Director*

**George Jones**  
*Financial Director*

**Cynthia Melugin**  
*Development Coordinator*

**Mollie Parsons**  
*Education Director*

**Valerie Rangel**  
*Membership Coordinator*

**Cristina Salvador**  
*Collections Manager*

## CONTACT US:

**Office Location:**  
725 Camino Lejo, Suite E  
Santa Fe, New Mexico 87505

**Mailing Address:**  
PO Box 23343  
Santa Fe, NM 87502-3343

**505-471-9103**

[www.santafebotanicalgarden.org](http://www.santafebotanicalgarden.org)  
[info@santafebotanicalgarden.org](mailto:info@santafebotanicalgarden.org)

# Capital Campaign Donors

(as of June 24, 2014)

## \$250,000 & ABOVE

- City of Santa Fe, Museum Hill Bicycle Trail
- Barbara Goede Foundation
- Cathy & Paul Kalenian, *In Honor of her father Kenneth Elfman; In Honor of his father Aram Kalenian*
- State of New Mexico
- Suzanne & Joel Sugg

## \$100,000-\$249,999

- Beverly & Don Clark
- Richard & Linda Gardner
- Nance & Ramón José López y familia

## \$50,000-\$99,999

- Anonymous
- City of Santa Fe
- Richard Curless & Joan Dayton, *In Memory of Diane Curless & Douglas Dayton*
- Catherine Davern Gronquist & Guy L. Gronquist, *In Memory of Francis Davern, Frances & Leroy Gronquist & In Honor of Peggy Davern*
- La Fonda on the Plaza, Jennifer & Rob Kimball, *In Honor of Ethel & Sam Ballen*
- Mark & Ann Livingston
- Susan & David Lummis
- Arnold & Doris Roland
- Rick & Beth Schnieders

## \$25,000-\$49,999

- Clare Newman Blanchard, Mildred Newman Thayer, James Wilson Newman Jr., Charles Carter Newman II, *In Memory of Clara Collier Newman*
- Cynda Grenfell
- Blaine Gutermuth, *In Memory of Shirley Gutermuth*
- Candace Good Jacobson, *In Memory of Myrl Good*
- Bonnie & David Joseph
- Albert & Elizabeth Kidd
- Dee Ann McIntyre
- Marlene Nathan Meyerson Family Foundation
- Paine Family Foundation
- Frauke & Keith Roth
- Santa Fe Garden Club

## \$10,000-\$24,999

- The Frederick & Karen Bailey Family
- The Ballen Daughters, *In Memory of Sam & Ethel Ballen*
- Barker Welfare Foundation, *In Honor of Sarane H. Ross*
- Evelyn H. Biery
- Pamela C. S. Buffington & George, Anne, John & Michael Buffington, *In Loving Memory of George Nicholas Buffington*
- Barcy Condon Fox
- John Hendricksen
- Krysten & Christopher Karachale, *In Loving Memory of Sandra J. Crawford*
- Jan Karafylakis
- Jeanne & Michael Klein
- Elizabeth & Bertil Lundqvist
- Lykes Knapp Family Fund
- Diana MacArthur
- Ron & Joy Mandelbaum
- Deirdre & James Mercurio
- Mary & Timothy Mitchell
- Fan & Peter Morris,

*In Honor of Sylvia Diane Herring*

- George A. Pelletier
- The Peters Family Art Foundation
- Helen W. Randall, *In Honor of Eliza Lovett Randall*
- Katherine A. Reed
- Jerry Richardson
- Joan Vernick, *In Memory of Clifford Vernick MD*

## \$5000-\$9999

- Anonymous, *In Loving Memory of Sandra J. Crawford*
- Pat Adams
- Stephen Ray Arias & Victoria Lee Arias de Lucero
- Mrs. Patricia H. Blinn, *In Memory of George Anderson Blinn, III*
- Elva Busch, *In Memory of Mr. & Mrs. Dean Parks*
- dede Collins & Dennis Cooper; Demi Malnar, and Esty, Sara & Mary Rose Malnar, *In Memory of Geri & Sam Collins*
- Ellen L. Collins, *For gardener mom & artist grandmother*
- Quarrier & Phillip Cook, Santa Fe Community Foundation
- The Michael S. Engl Family Foundation
- Helen C. Gabriel, *In Honor of Bertram Gabriel, Jr.*
- Deborah Gaynor & Eric Hoover, *In Memory of Janet Fowler*
- Mr. & Mrs. Vere Gaynor
- Bud & Valerie Hamilton
- Bessie Simpson Hanahan
- Susie & CT Herman, *In Honor of our granddaughters Mackenzie, Eva, Brooke, Ily, & Tatum Herman*
- Richard & Dodie Jackson
- Don & Alice Liska
- Christine & Pierre Lorillard, *In Loving Memory of Elaine Guthrie Lorillard & Gretchen Schroeder Metteer*
- Colette LaFortune Pogue & Thomas Pogue
- Helen Pynn & Margaret West
- Peggy Rudberg & Jay Bush
- Merry Schroeder, *In Memory of John A. Schroeder*
- Judy & Bob Sherman
- Lyn Schmidt, *In Memory of Mary Mitnacht*
- The Stone Foundation, *In Memory of James H. Stone*
- Claire & Steve Weiner, *In Memory of Stan & Françoise Ulam*
- William Akers Jr. & Georgia O. Akers Private Foundation
- Wyncote Foundation

## \$1,000-\$4,999

- Anonymous
- Ann G. Ash
- Marsha Bailey
- Beth Beloff & Marc Geller
- Bibb-Moxey LLC, *In Memory of Elizabeth "Betty" Moxey*
- Gina Browning & Joseph Illick
- Fletcher & Diane Catron
- Kenneth Collins & David Jenness

- Jamie Douglas
- Dr. George T. Duncan
- Robert H. Dyson
- Doris Francis-Erhard & Louis Erhard
- Viola Fisher
- David Frank & Sugi Sugiyama, *In Honor of Charles Newman*
- Barbara Goede, *In Honor of Jan & Ray Plote*
- Herb Society of America, Sangre de Cristo Unit
- Nora & Robert Hillier
- Renate and Nicole Hixon
- George Jones & June Ferrill
- Wendy Kasprzyk-Roberts & Lance Roberts, *In Memory of her father William F. Reynolds*
- Mari & Peter Kooi
- Carol & Bob Kurth
- Mark & Stacy LeFevre, *In Memory of William F. Reynolds*
- Phyllis & Stanford Lehmborg
- Susan McGreevy & Herb Beanhauer
- Andrea Meditch
- Rosemary & Bernie Minard
- Leigh Moiola & Charles Dale
- Don Moore
- Luanne & Stephen Moyer
- Marisol A. Navas Sacasa & Andres F. Navas, *In Loving Memory of Juan R. Navas Sacasa*
- Robert Noel
- Susan & Win Priem
- Mary Lou Pringle
- Richard T. Button Foundation, Inc., *In Honor of Bonnie & David Joseph*
- Robert Roach & Patrick Carr, *In Honor of Charles Newman*
- Robson Foundation
- Nannette Sherman, *In Memory of her father William F. Reynolds*
- Sidney & Sadie Cohen Foundation, *In Honor of Bertram Gabriel, Jr.*
- Mary C. Sloane & Andrew Wallerstein
- Mike & Bonnie Spear
- Donna & Robert Spina Helmholtz
- Drew Stewart & Anna Hargreaves
- Linda & George Wilson
- Woods Family Foundation

## OTHER GIFTS

- Anonymous
- Jeffrey & Faith Appelquist
- Tom Appelquist & Charles Newman
- Julianne & Bob Ashkinaze, *In Honor of Sharon & Ed Sorken*
- James & Lynn Babcock
- Paul Barnes & Vernon James
- Clayton & Hester Bass
- Linda & Jonathan Batkin
- Lisa T. Bemis
- Jack & Carole Berger
- Jaquie Bosch
- Judy & Jack Bryan
- Joyce E. Buford
- Mary Beth Burnside
- Julius & Helen Cahn
- Lois Callaghan, *In Memory of Callaghan/Beun Family*
- Fletcher & Diane Catron
- Linda Churchill & Frank Morbillo
- Michael & Jean Churchman, *In Memory of Stan & Françoise Ulam*
- Clarence Raymond Clark III & Linda Ann Clark, *In Memory of Stan & Françoise Ulam*
- Jim & Linda Cohen, *In Honor of Donna Spina Helmholtz*
- Fran Cole & Bryan Force
- Ben Crane
- Susan & Kenneth Crawford
- Brian Curless, *In Honor of Richard Curless*
- Lynn Curless, *In Honor of Joan Dayton*
- Francesca & Alan Davies
- Sherry Davis, *In Honor of Cathy Kalenian & Joan Dayton*
- Joan Dayton, *In Memory of Terence Tarr*
- Joan Dayton & Richard Curless, *In Honor of our marriage*
- Joan Dayton & Richard Curless, *In Honor of Jerry Richardson*
- Suzanne Delehanty, *In Honor of Tom Appelquist & Charles Newman*
- Mark & Linda Delfs
- Design with Nature Ltd
- Linda Donnels & Lawrence Logan
- Hope DuBois
- Barbara & Carlos Duno
- Paul Eitner & Denise Roy
- Patricia Feather
- Patricia Ferguson
- Else Folsom, *In Memory of MacGregor Folsom*
- Anne & Dave Fox, *In Honor of Barcy Fox*
- Barcy Fox, *In memory of Nancy Hennessey*
- Kathy Gentry, *In Honor of Charles Newman*
- Barbara Good, *In Honor of Karen Rodman*
- Liza L. Grant
- David Grusin & Nan Newton, *In Memory of Stan & Françoise Ulam*
- Kay & Sam Haas
- Hallidie Haid, *In Honor of Deirdre Mercurio*
- Adel & Gabrielle Hakki
- Sandra Hanson
- Anna Hargreaves, *In Honor of Drew Stewart*
- Nina Harrison
- Helen & Brian Heekin
- Tom Higley & Alan Fleischchauer, *In Memory of Terence Tarr*
- The Hinsman Family
- Donald & Dorothy Hoard
- Barbara & Bud Hoover, *In Honor of Joan Dayton & Richard Curless marriage*
- Patricia Houtz & Ruth Ann Marshall
- Joyce Idema
- Virginia Inman
- Gary & Carol Johnson

Although we have made every effort to assure the accuracy of each donor name on this list, we apologize if we have inadvertently made an error. Please let us know of any errors so that we may correct them immediately. Thank you.

- Cathy & Paul Kalenian, *In Memory of Douglas Dayton*
- Gisela Knight
- The Knorr Family
- Alice & Jerry Kruse, *In Honor of our friends Barbara Goede & Charlie Newman*
- George & Nancy Lane
- Liz & Bill Layden
- James Ledyard & Marty Kendall
- Phyllis Lehmborg
- Betty Lilienthal, Meg Lilienthal, & Buchanan Sharp, *In Memory of Stan & Françoise Ulam*
- Heather Martin
- Joanne Nelson McCarthy
- Linda Milbourn
- Cathy Miller
- Noreen Modinski, *In Honor of Barbara Goede*
- Sana Morrow
- Andrea Multari
- Ann Mumford
- Gloria Murphy, *In Honor of Barbara Goede*
- Bob Nurock
- Jorden D. Nye
- David Olson
- Sarah & Ann Olson, *In Honor of Joan Dayton*
- Mary Lou & Alex Padilla
- Mollie Parsons, *In Honor of Ben Finberg*
- George Pelletier & Jim Shane Hailey
- Marion J. Phelps
- Judith Phillips
- Jan & Ray Plote, *In Honor of Barbara Goede*
- Ann Quarles, *In Honor of the marriage of Byron Smith & Julie Kelly & In Honor of the marriage of Kerrie Dixon & David Renteria*
- Beverly Rhymes
- Marianne Sacknoff
- Cristina Salvador
- Santa Fe Garden Club, *In Honor of Linda Milbourn*
- Judy Sargent, *In Memory of Timothy Davern*
- Donna Seifert
- Nadine Stafford, *In Honor of Paula Scarpellino, Jan Kerr, Mary Otten, & Robin Dechert Schachat & In Memory of Lara Morrow*
- Drew Stewart & Anna Hargreaves, *In Memory of Timothy Davern*
- Jaquie Tomke-Bosch
- Sandra Taylor
- Carl & Denise Troy
- Dannehl & Kevin Twomey
- Louis & Betty Weiner, *In Memory of Stan & Françoise Ulam*
- Nina Wells
- Peter & Marianne Westen, *In Memory of Frank Sabatte*

THANK YOU TO ALL OUR GENEROUS DONORS! 7

**SANTA FE BOTANICAL GARDEN  
AT MUSEUM HILL**

715 Camino Lejo, Santa Fe

**HOURS**

**April–October:**

Open 7 days a week, 9am–5pm

**November–March:**

Open Thursday–Sunday, 11am–3pm

**GROUP TOURS UPON REQUEST  
FACILITY RENTAL AVAILABLE**

The Garden is always free to SFBG Members. For additional admissions information, go to [www.santafebotanicalgarden.org/visit-us](http://www.santafebotanicalgarden.org/visit-us)

# Upcoming Events!

CRISTINA SALVADOR



Join us September 13th for a Harvest Dinner

**August 3, 9am–5pm**  
**Plein Air Alfresco**

*Museum Hill Garden*  
Another Viva Flora! Art Happening  
**Free for SFBG members**  
**\$35 not-yet-members**

**August 27, 5:30–8:30pm**  
**Sol y Cena—Seated Farm Table Experience on the Kearny’s Gap Bridge**

*Museum Hill Garden*  
An extraordinary free benefit for our Aster Society members, \$1,000 level members and above

**September 13, 6pm**  
**Harvest Dinners—Small Intimate Gatherings with Friends**

Dine with friends at one of several sensational private homes. Luscious meals prepared with locally grown ingredients. **Tickets online \$100 each.** Proceeds will benefit children’s education programs

**October 25, 9am–5pm**  
**Halloween on Community Day**

*Museum Hill Garden*  
**Free to NM residents with valid ID & students with valid ID & anyone in costume!!**

**December and early January**  
**GLOW—A Winter Lights Event**

*Museum Hill Garden*  
Gather friends and family together to explore the Garden as never before when it is transformed into a glowing winter wonderland.



More info at [www.santafebotanicalgarden.org](http://www.santafebotanicalgarden.org)